



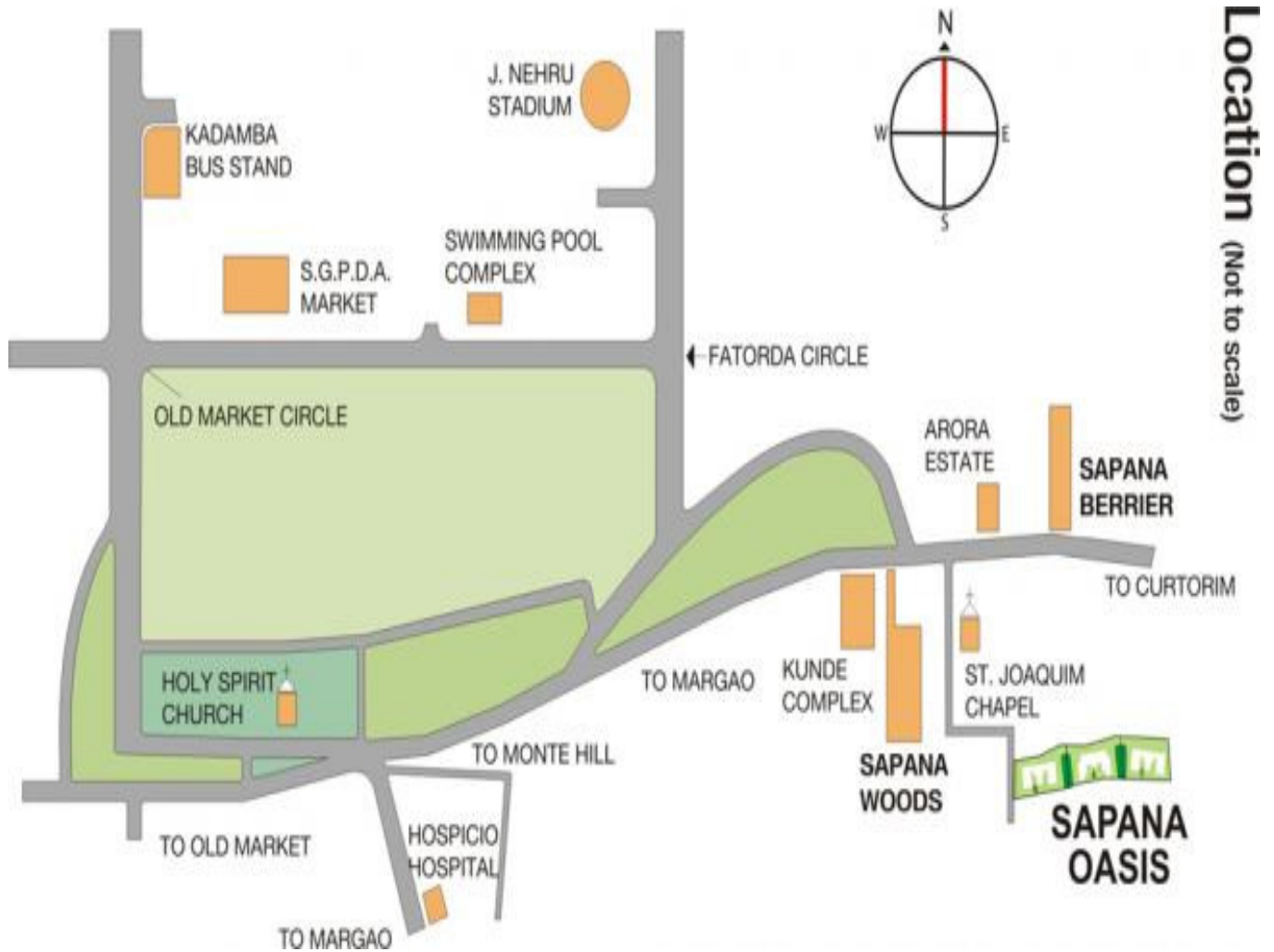
### *Highlights*

- Colva beach is just 5 km away
- Lush green surroundings
- Landscaped gardens
- Rs 14,89,740 onwards

### *Amenities*

- Vitrified tiles flooring in full apartment
- Door frames of chemically treated wood. Main door frame of Teakwood. Toilet door frames of marble / granite
- Windows shall be powder coated aluminum sliding type
- Internally oil bound distemper. Externally cement paints. All ceilings painted with white wash
- Granite platform with stainless steel sink and Ceramic tiles dado 0.6 mt. above platform with provision for washing machine and exhaust fan
- Concealed electrical copper wiring with branded switches
- Toilet with WC, wash basin, soapdish and shower with hot and cold arrangement
- Underground sump with overhead supply
- All windows / ventilators to have Marble sill internally
- Rust free internal plumbing for toilets
- Lift with backup Generator
- Stilt Parking/Children Park

*Location:* SAPANA OASIS is located at Borda, Margao, Goa. Situated at the foot of the calm Monte Hill



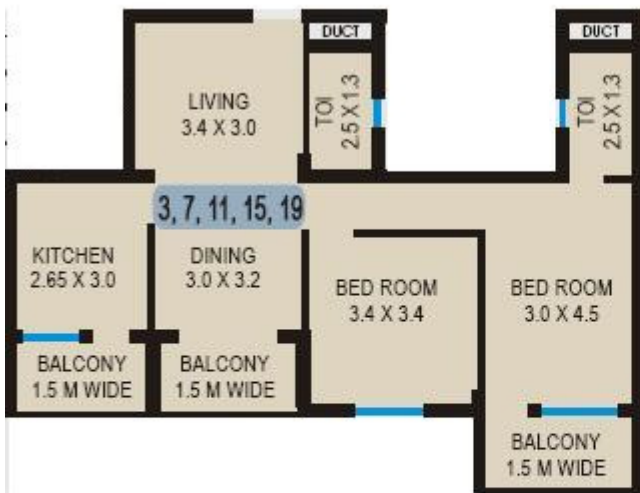
*Site Plan*



*Floor Plan 1B7K*

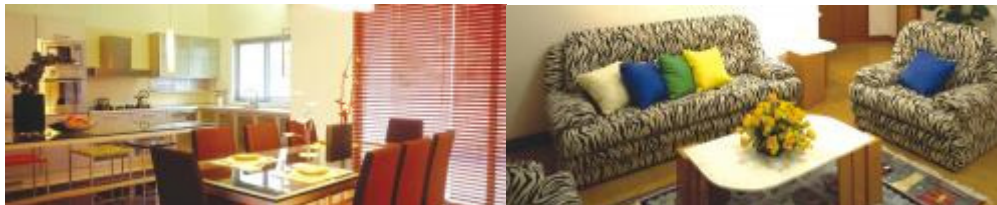


*Floor Plan 2 B7K*



*Floor Plan 3 BHK*





*Apartment Type, Size, Price*

Type	Size	Price (Rs)
1 BHK	70.94 sq m	14,89,740
2 BHK	97.98-98.63 sq m	20,57,580 onwards
3 BHK	133.03 sq m	27,93,630

*Booking and Payment Plan*

- 1) 25 % Booking. (Cheque in the name of Developer).
- 2) Identify the apartment.
- 3) Receive booking confirmation, Receipts from Developer.
- 4) Any queries, contact Investinnest customer support in your respective country at numbers mentioned below.
- 5) PLC, Car Parking, Maintenance, Club charges etc as applicable

Sapana –Oasis@InvestInnest.com