



*Highlights:*

- 3 Bedroom Apartments from 1395sqft to 1695 sqft.
- World-class location with a world-class view.
- Located at Outer Ring Road-Sarjapur road Junction.
- Wipro Corporate office and a stone's throw from Intel & Accenture.
- Neighbouring Innovative Multiplex complex, Schools and Hospitals.
- Club House-Gymnasium & Steam Room, Table Tennis, TV room and Multi - purpose Hall.
- Swimming Pool, landscaped gardens, Tennis/Badminton Court & Convenient store.

*Location:*

Located at Outer Ring Road-Sarjapur road Junction.

The distance to Mantri Flora from major landmarks:-

- Airport Road           5 kms
- Central Silk Board   6 kms
- Wipro                   2.4 kms
- Forum Mall           7 kms
- Electronic City       13 kms

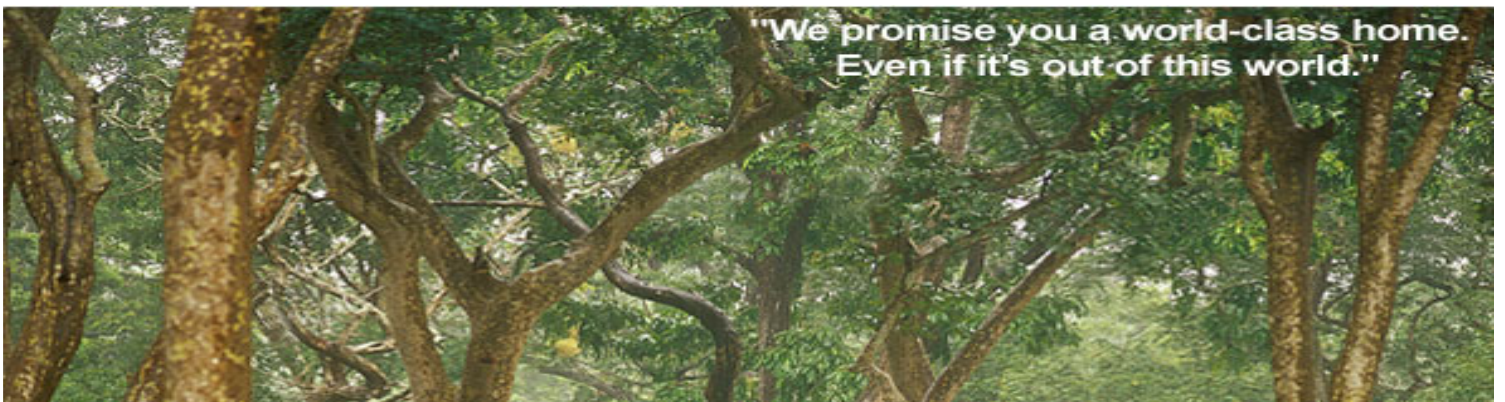


*Amenities*



*Amenities:*

- Children's play area.
- Basketball Post and Open Amphitheatre.
- Servant/Driver toilets.
- Round-the-clock security, CCTV camera.
- Fire fighting systems as per the statutory requirements.
- EPABX/Centrax facility, Intercom facility.
- Back-up Generator.
- Water Treatment Plant.



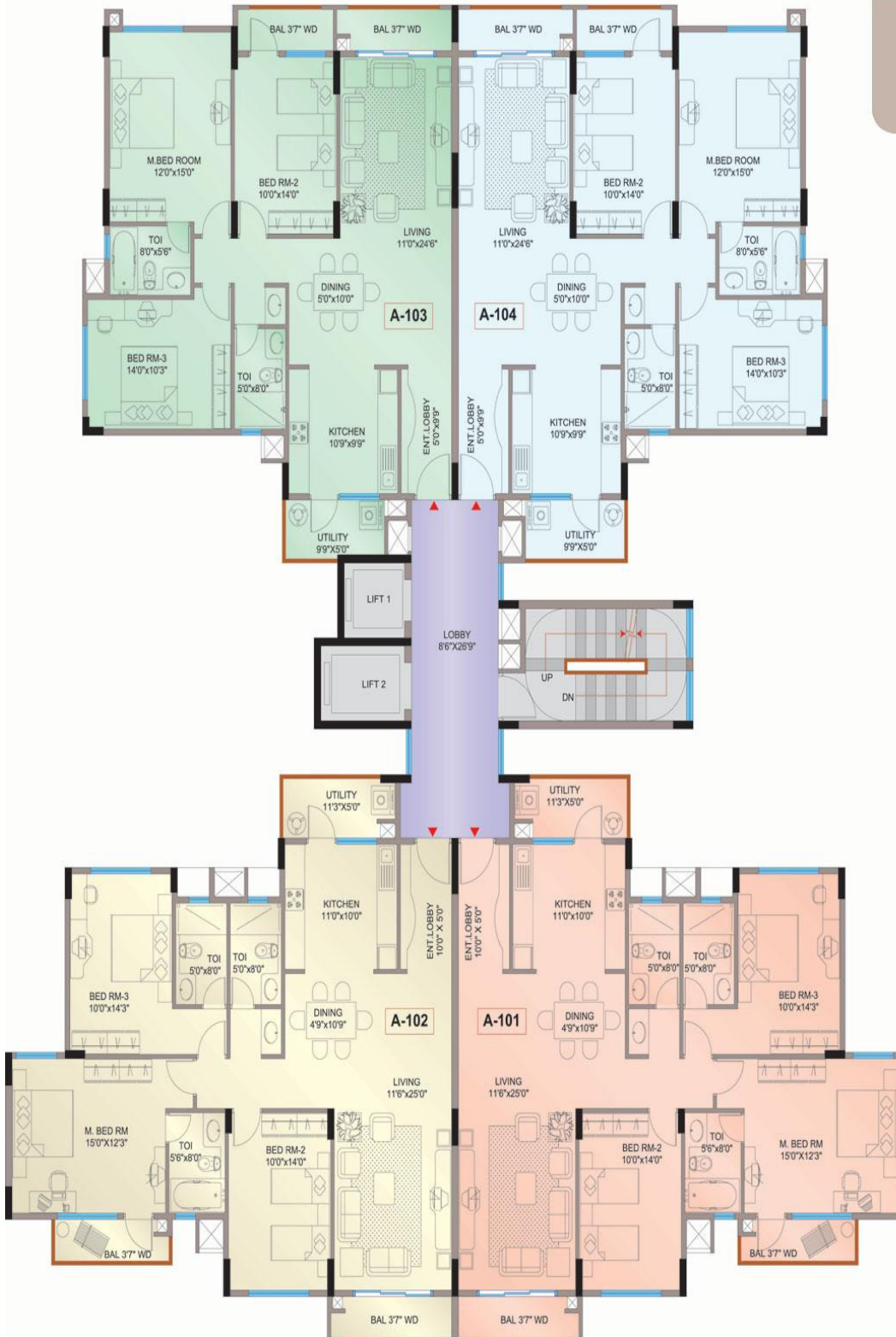
3 Bedroom (Ground) - 1395 sq. ft

WING - A Ground Floor Plan



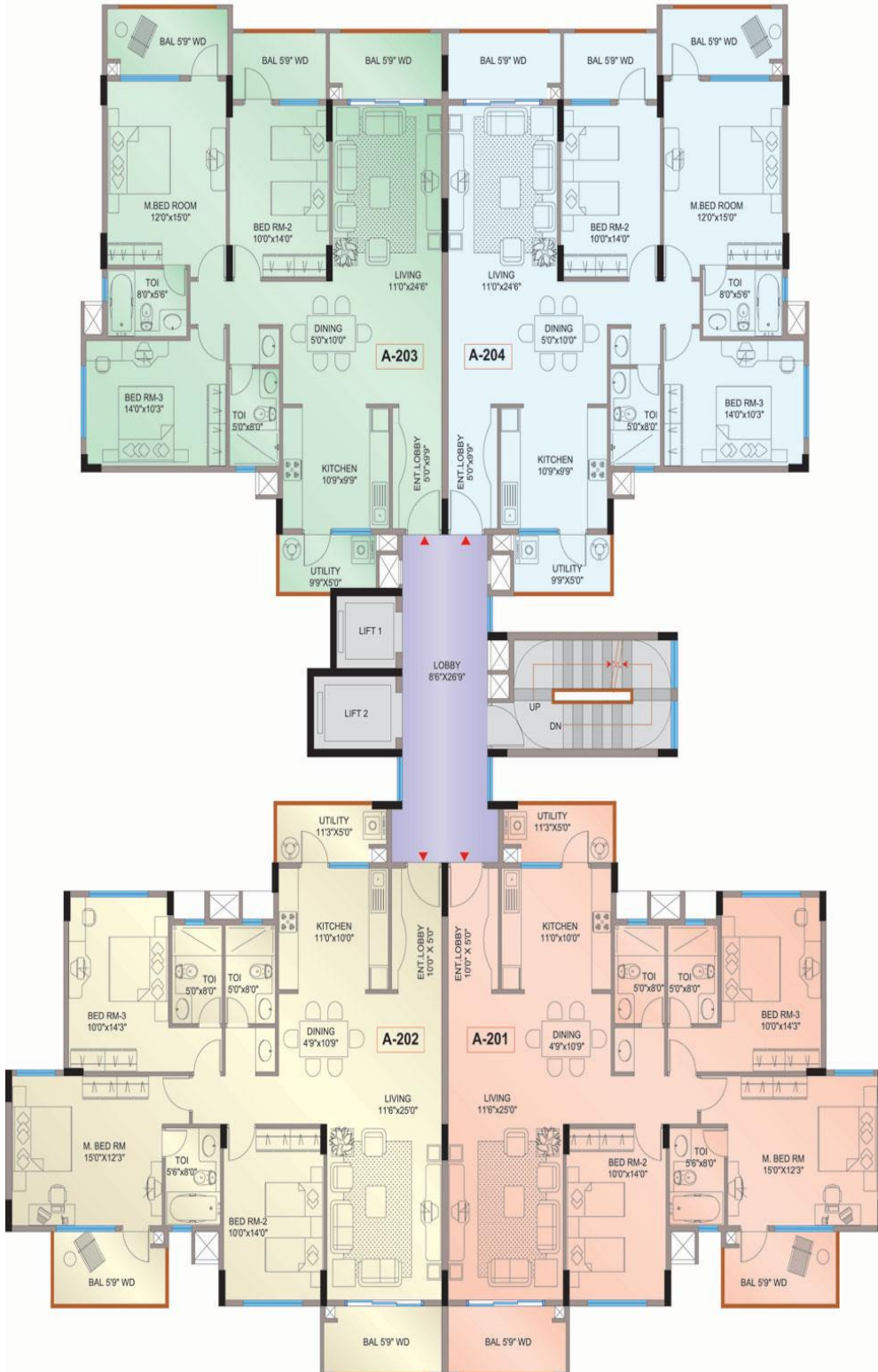
*3 Bedroom (1st Floor) - 1480 to 1630*

**WING - A First Floor Plan**



*3 Bedroom(2nd to 11th Floor)- 1615 to 1695*

**WING - A 2nd-11th Floor Plan**



### *Apartment Type, Size, Price*

Type	Size (Sqft)	Price (Rs)
3 Bedroom (Ground)	1395	Not Available
3 Bedroom (1st Floor)	1480 - 1630	80 Lakh Onwards
3 Bedroom (2nd to 11th Floor)	1615 - 1695	80 Lakh Onwards

Note: - Completion March '08

### *Booking and Payment Plan*

Book your apartment in few easy steps below.

- 1) Identify your apartment.
- 2) Arrange site visit for your family or friend in 24 hrs by calling our support desk.
- 3) Pay earnest amount of 20% on application.
- 4) Booking amount Cheque in the name of 'Mantri Developers Pvt LTD'.
- 5) Receive booking confirmation, Receipts from Mantri Flora, InvestInNest.
- 6) Any queries, contact InvestInNest customer support in your respective country at numbers mentioned below.

**Mantri-Flora@InvestInNest.com**