

Welcome to "Your own home close to nature"... where peace, tranquility and comfort rule above the chaos and hardship of the outside city life...yet so well-connected to Delhi-NCR and so complete in itself that it offers a range of facilities such as education facilities, recreation options and so on.

Jaypee Greens Aman presents at Sector 151, on the Noida-Greater Noida Expressway. The project is spread over 70 acres with apartments flanked with numerous thematic gardens, the sight of which is bound to soar your spirits whenever you look outside the window or step out of the apartment building. Along with this Chip & Putt Golf Course.

**Special Features:**

2 Bedroom and 3 Bedroom Apartments

Chip & putt golf course

Ample car park spaces with reserved parking and visitor parking

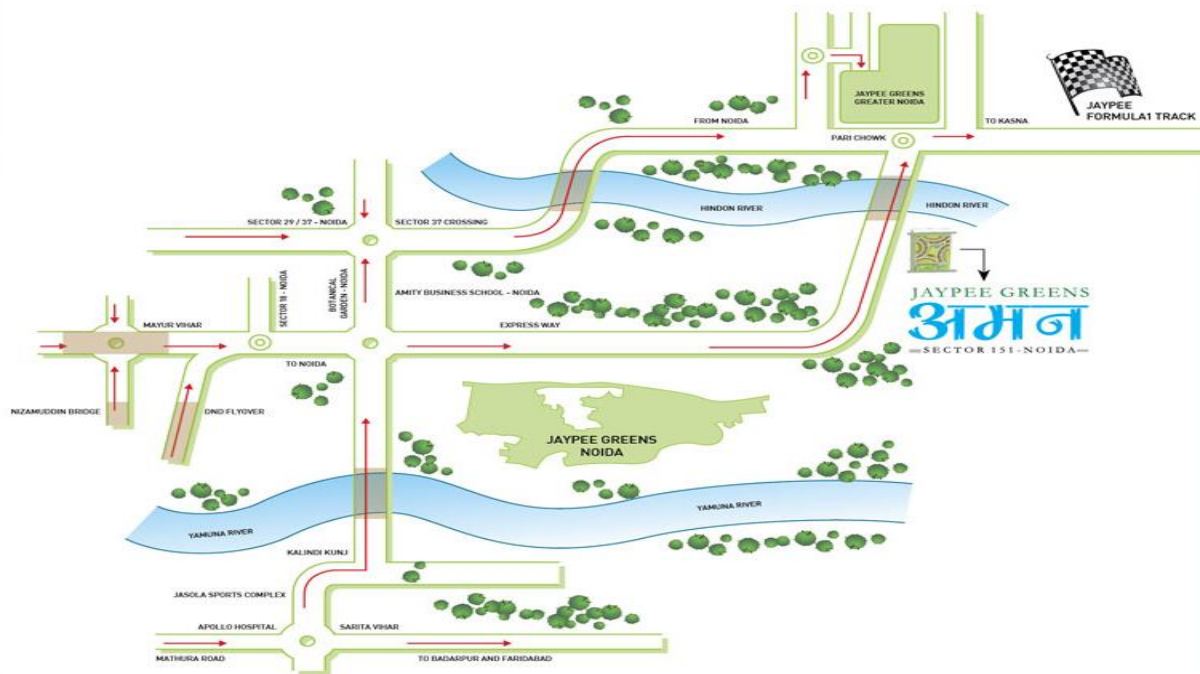
Crèche, nursery to senior secondary education facilities

Power and water backup

Connected through 45 meters wide sector road from the Expressway. Just 25 minutes driving distance from South Delhi

Close proximity to numerous SEZ's & commercial centres





Easy accessibility to Delhi and Greater Noida through the 8-lane Expressway

Great connectivity through the proposed metro which will run along the Noida-Greater Noida Expressway

15 minutes from DND Flyway

25 minutes from South Delhi

35 minutes from Connaught Place

Download PDF

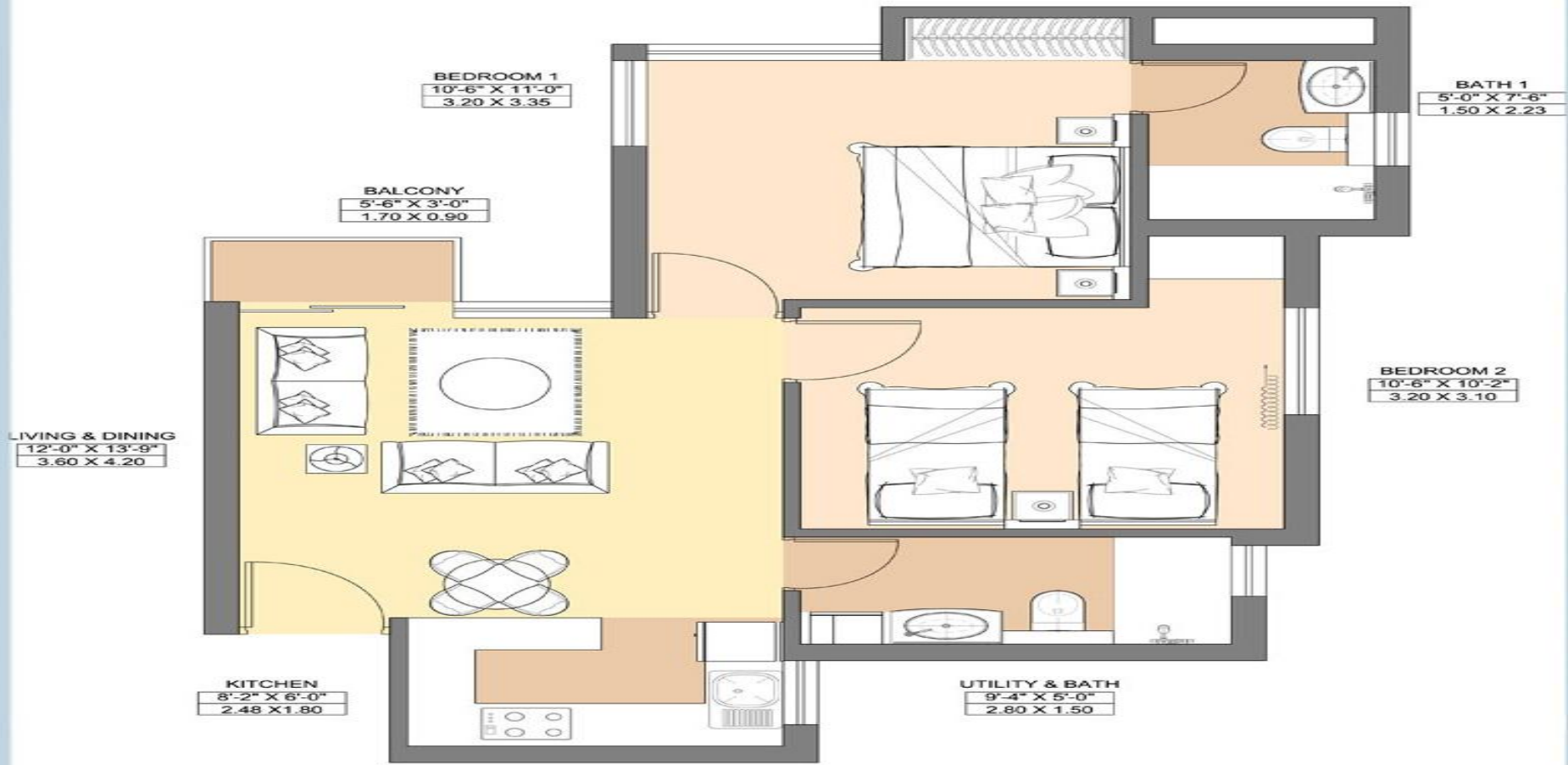


The apartment homes have been built on a simple yet elegant design ensuring highly efficient layout plans that optimally utilize the space of your apartment. Modern and elegant the interiors are a true fusion of splendor and efficiency and thereby enhance the overall look and feel of newage lifestyle.

The windows of your apartment open to large green vistas merging the interior space with the external environment seamlessly. The apartments are offered in 2 Bedroom, 3 Bedroom, 3 Bedroom + Servant Room options with respective areas as 850 sq.ft., 1200 sq.ft. & 1320 sq.ft.

At Aman you can enjoy life everyday. With a number of recreation options for you and your family life is not like a daily mundane routine. These include **Social Club** exclusively for the residents of the community with special features like **kids' play area, health club** that invite you to relax and enjoy everyday with family and friends. There is a **Chip & Putt Golf Course** for all the golf lovers. There are also various **Sports Facilities** such as **badminton and basketball courts** etc. Besides these you also have **landscaped walkways, shopping complex** as other recreation options.



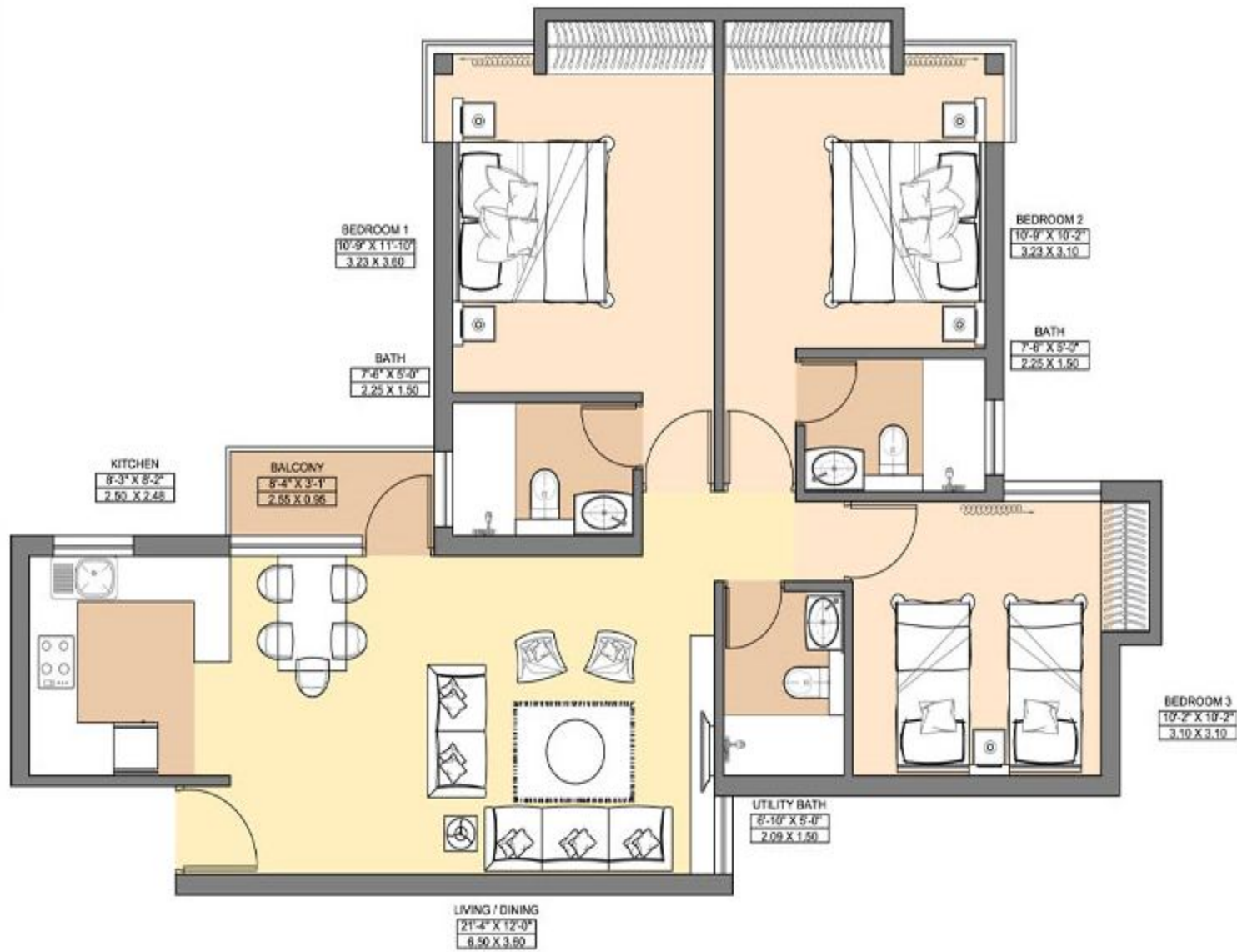


**TYPE A1 - 2 BHK**  
SALE AREA 850 SFT (79.0 SQM)

Download PDF

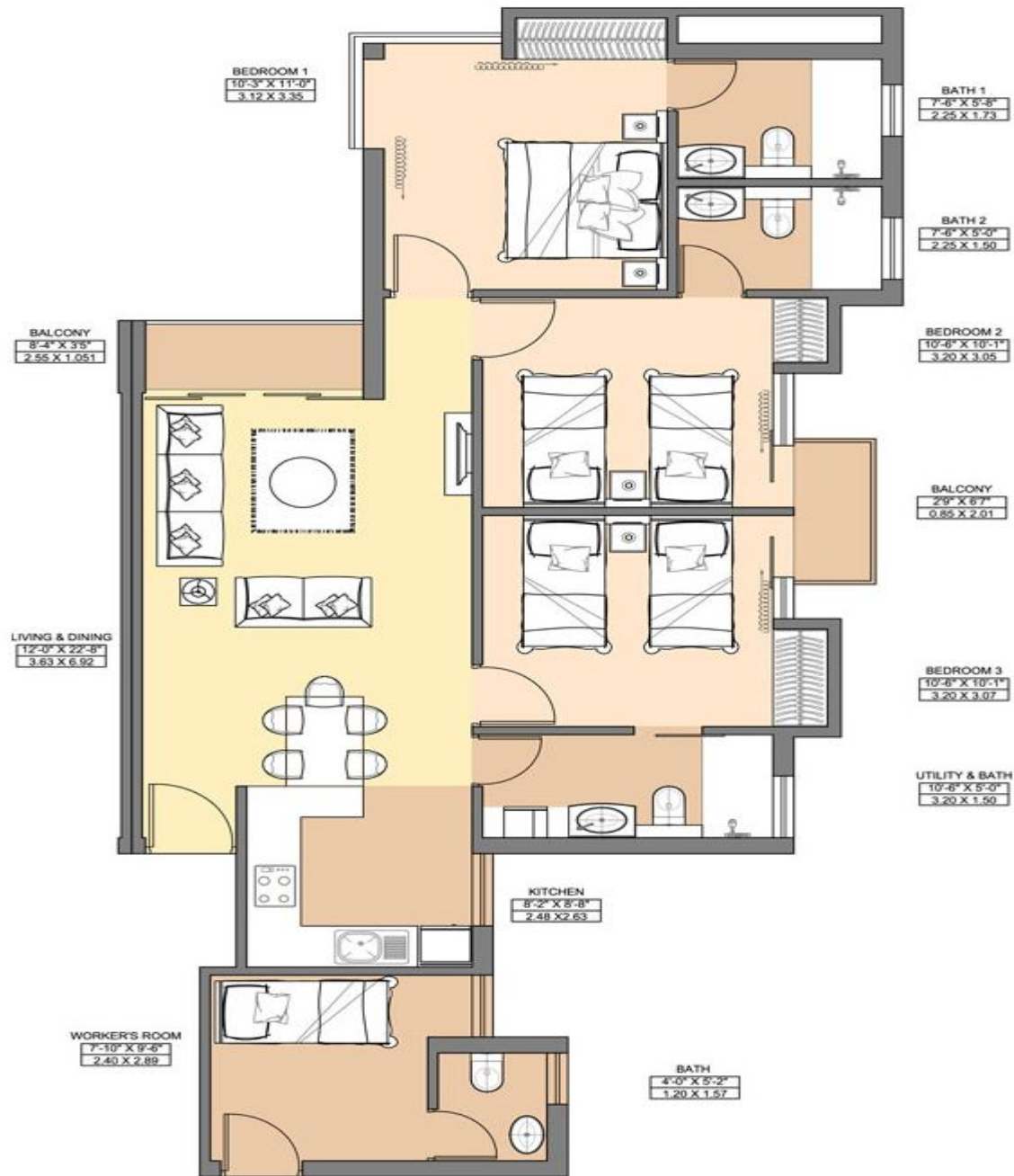


Call Us: UK 020 8090 4217 \* USA (917) 338 6416 \* Canada (613) 482 9788 \* India 9717841117



## TYPE B2 - 3 BHK

SALE AREA 1200 SFT (111.51 SQM)



**TYPE C2 - 3 BHK + WORKER'S ROOM**

SALE AREA 1320 SFT (122.68 SQM)

## About developer

The Jaypee Group is a well diversified infrastructural industrial conglomerate in India. Over the decades it has maintained its salience with leadership in its chosen line of businesses - Engineering and Construction, Cement, Private Hydropower, Hospitality, Real Estate Development, Expressways and Highways.

The Jaypee Group is synonymous with creating premium lifestyle experiences through exclusive golf-centric real estate. The existing 452-acre development at Jaypee Greens, Greater Noida integrates homes with landscaped greens, resort living and commercial developments amidst an 18 hole Greg Norman golf course. It is a complete lifestyle destination offering individual homes and luxury apartments.

Book your apartment at Jaypee Greens Aman in few easy steps below.

- 1) Identify your apartment.
- 2) Arrange site visit for your family or friend in 24 hrs by calling our support desk.
- 3) Pay earnest amount on application as applicable.
- 4) Booking amount Cheque in the name of "Jaypee Infratech Ltd.
- 5) Receive booking confirmation, Receipts from Jaypee.
- 6) Any queries, contact InvestInNest customer support in your respective country at numbers mentioned below.

