




InvestInNest
Luxury Indian Homes


**COMMANDER'S
COURT**
Luxury Homes FROM DLF

Set in the most prestigious part of Chennai, centrally located and luxuriously appointed, Commander's Court is an oasis of calm which allows you to live the life you deserve – A life of plenty, a life of comfort, a life beyond the mundane.

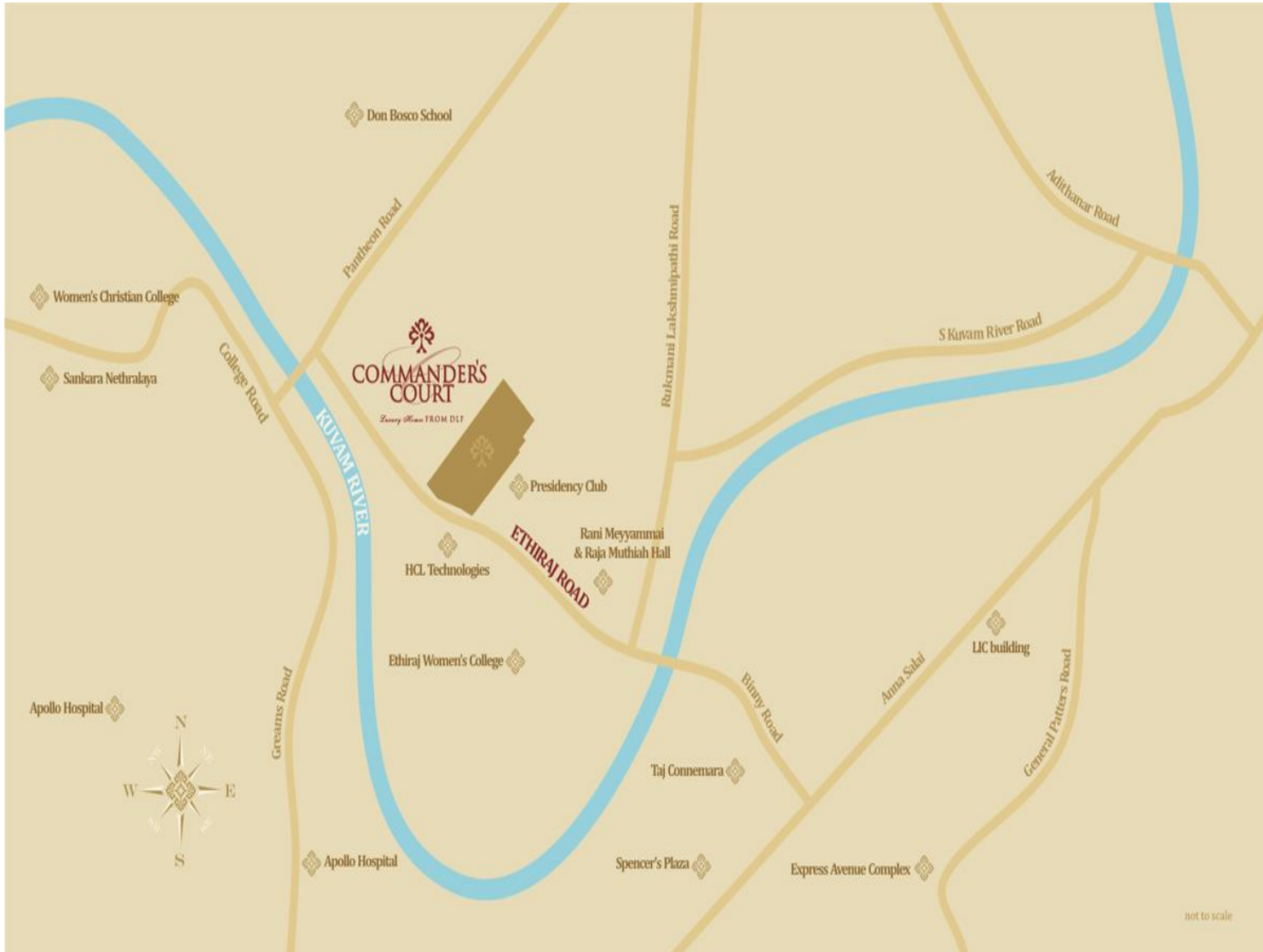
Situated in the heart of the prosperous area of **Egmore, Ethiraj** road is a small hamlet replete with a history which harks back to the gentler times of the British Raj. The Road, formerly known as the Commander-in-Chief Road houses venerated institutions like the Taj Connemara, The Presidency Club and the Egmore Post Office which give the neighbourhood a distinct aura of colonial gentility with its turn of the century edifices. Today, it brings together the past and the present, adding in modern amenities and conveniences within its fold from malls to shopping arcades, multi specialty hospitals to schools and colleges – creating a space which is truly a cynosure of world class living.

PROJECT DETAILS

Ground Area	: 4.11 Acre (approx)
No of Blocks	: 5
No of Floors	: B3+ B2 + B1 + Stilt + 17 (E – Block) B3+ B2 + B1 + Stilt + 16 (A , B , C, D Block)
No of Flat	: 354 (approx)
<u>Size of Flats</u>	: 1576 – 1968 (3BHK + 3T) 2572 – 2583 (3BHK + 3T + Study) 3957 – Duplex(4BHK + 4T)

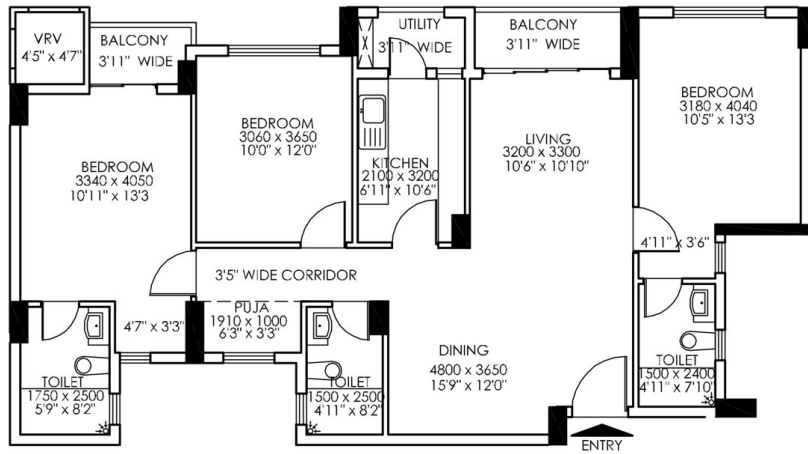


Location

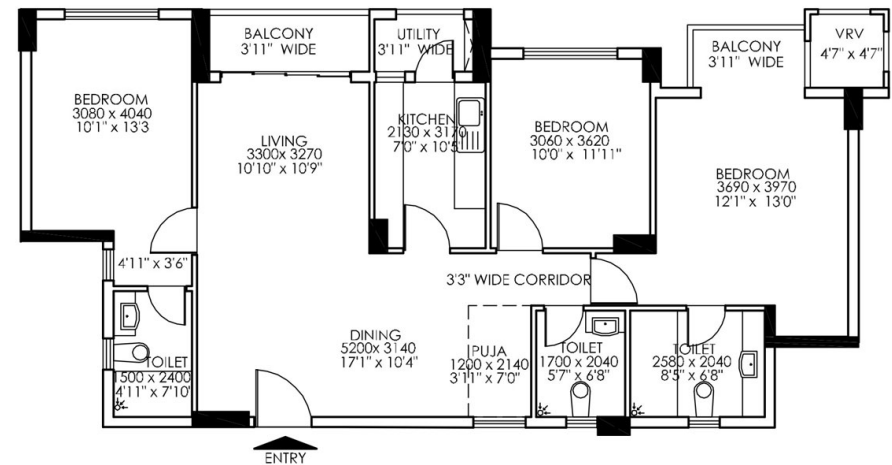


Call Us : UK 020 8090 4217 * USA (917) 338 6416 * Canada (613) 482 9788 * India 9717841117

3BHK WITH 3 BATHROOMS



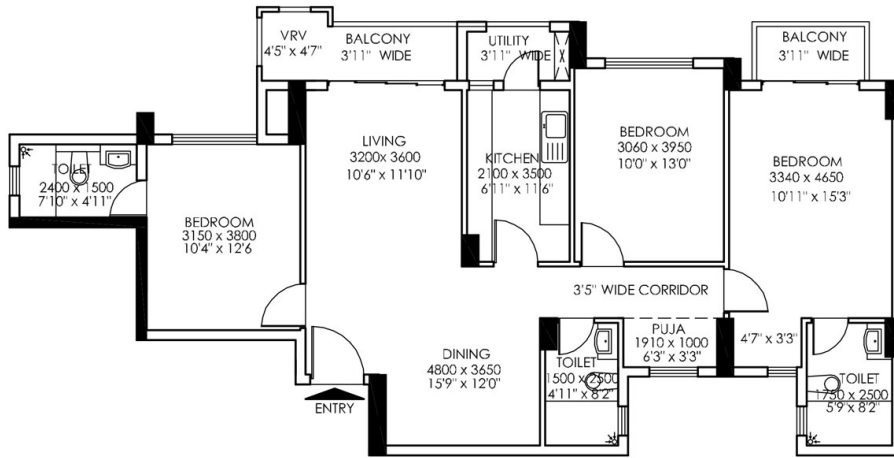
TENTATIVE PLAN OF APARTMENT - 2
TENTATIVE SALEABLE AREA = 1576 SQFT



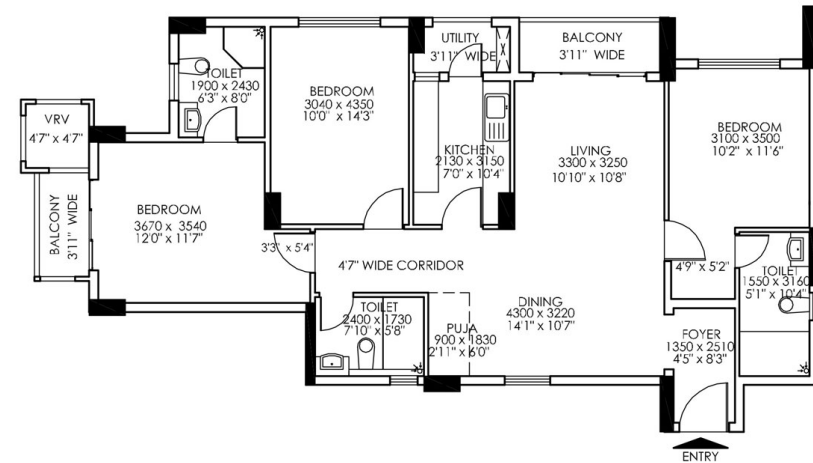
TENTATIVE PLAN OF APARTMENT - 3
TENTATIVE SALEABLE AREA = 1580 SQFT



3BHK WITH 3 BATHROOMS



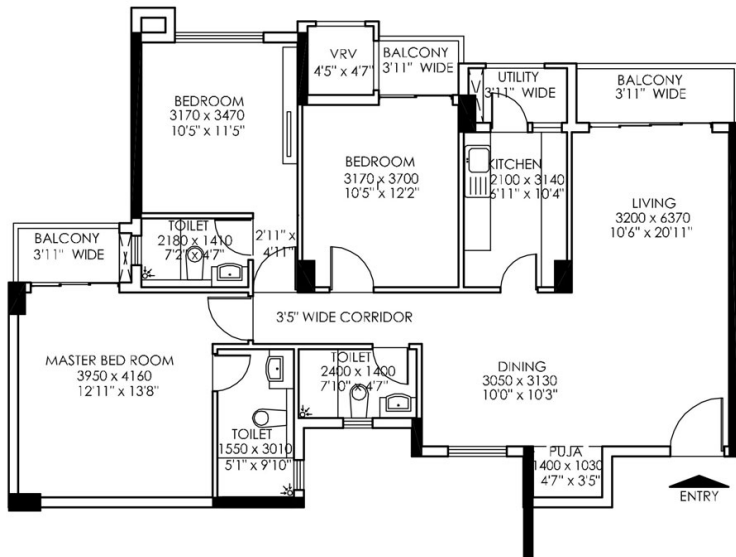
TENTATIVE PLAN OF APARTMENT - 1
TENTATIVE SALEABLE AREA = 1603 SQFT



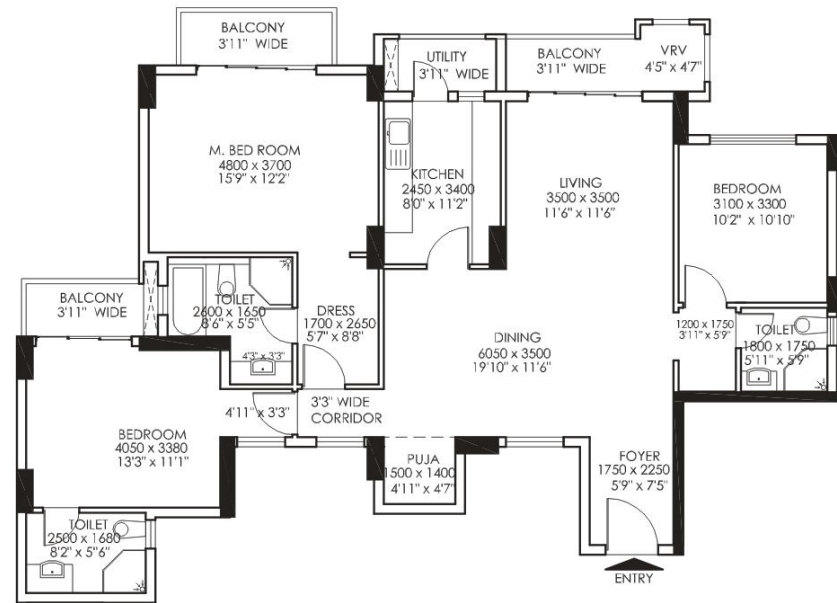
TENTATIVE PLAN OF APARTMENT - 4
TENTATIVE SALEABLE AREA = 1636 SQFT



3BHK WITH 3 BATHROOMS



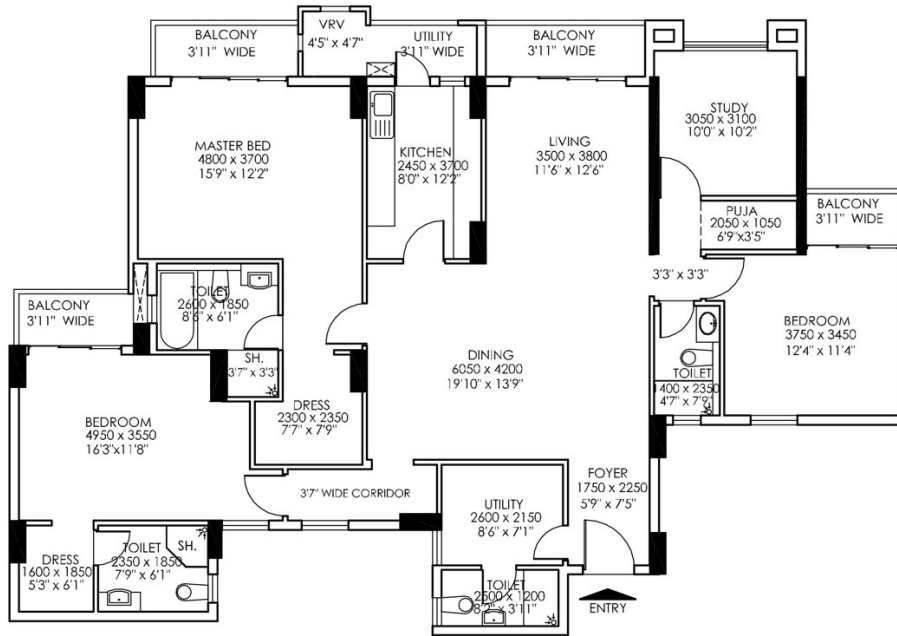
TENTATIVE PLAN OF APARTMENT - 1, 2, 3 & 4
TENTATIVE SALEABLE AREA = 1637 SQFT



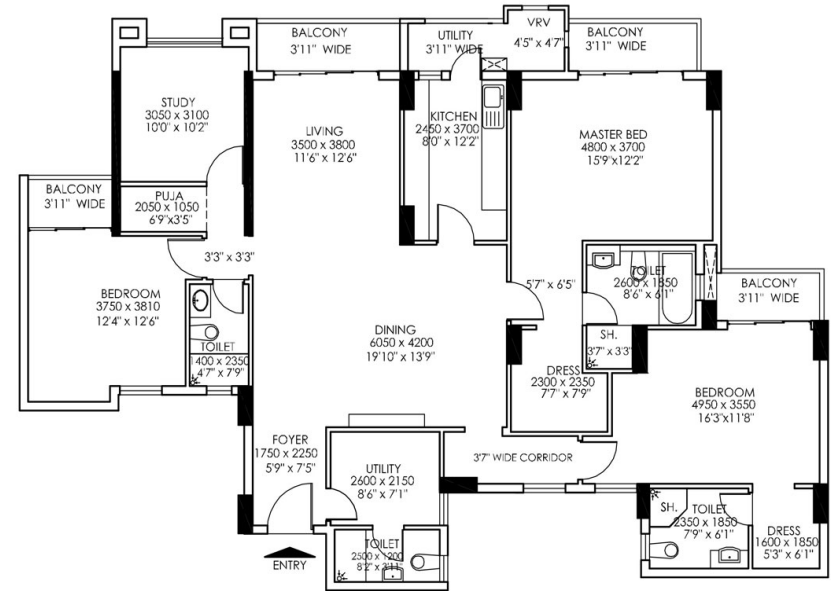
TENTATIVE PLAN OF APARTMENT - 6
TENTATIVE SALEABLE AREA = 1968 SQFT



3BHK WITH 3 BATHROOMS+Study



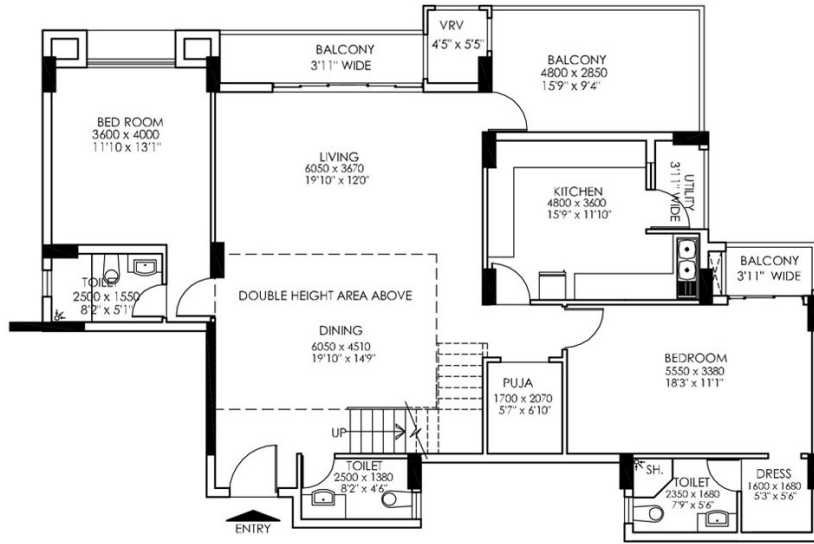
TENTATIVE PLAN OF APARTMENT - 2
TENTATIVE SALEABLE AREA = 2572 SQFT



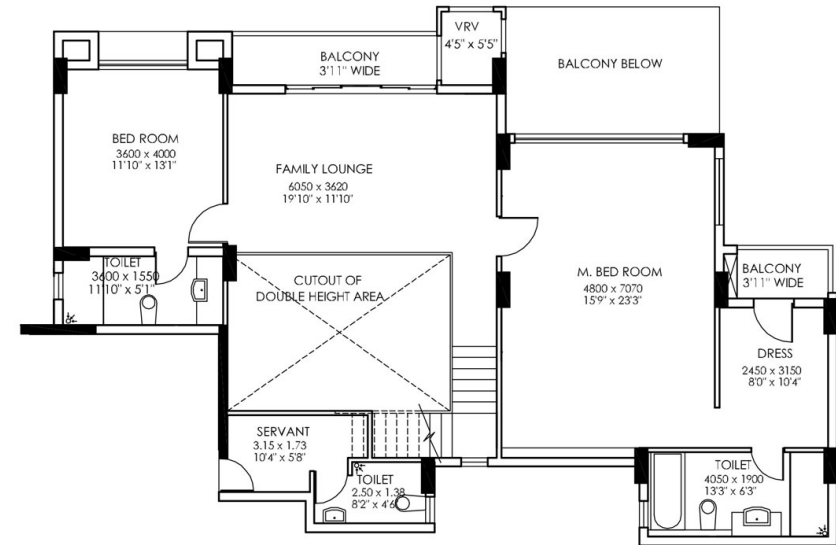
TENTATIVE PLAN OF APARTMENT - 3
TENTATIVE SALEABLE AREA = 2583 SQFT



4 BHK Duplex



TENTATIVE LOWER LEVEL PLAN OF DUPLEX - 1 & 4
TENTATIVE SALEABLE AREA = 3957 SQFT



TENTATIVE UPPER LEVEL PLAN OF DUPLEX - 1 & 4



SALIENT FEATURES

Interior

Air-conditioned Apartments & Duplexes

Fully Fitted Kitchen with Appliances

Jacuzzi In Master Bathroom

Wi-Fi Enabled And IPTV Ready

Convenience

3 Levels Of Basement Car Parking

24 Hours Water Supply

100% Power Back-up

Environment

70% Open Area

Landscaped Gardens

Rainwater Harvesting

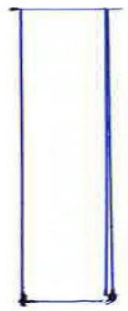
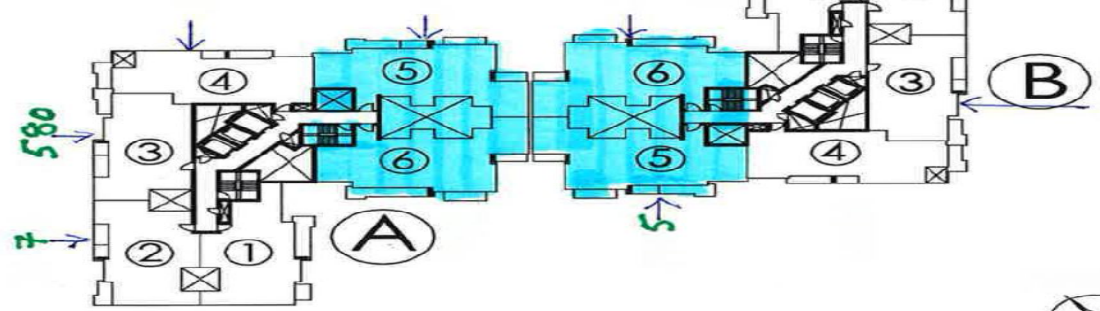
Sewage Treatment Plant

Water Treatment Plant

- **Safety & Security**
- Smart Card Access Control
- Video Surveillance Systems
- CCTV For Parking & Entrance Lobby
- Fire Alarm Systems In Common Areas
- **Leisure & Entertainment**
- Restaurant
- Party Lawn
- Swimming Pool
- Gym & Spa
- Aerobics & Yoga Centre
- Table Tennis Room



Pool 8



About DLF - The DLF Group has charted its next growth steps to retain its leadership position in India. Already a major player in locations across the country, including key metro cities and urban centres, DLF, with over Six decades of experience, is focusing on strengthening its lateral and vertical business drivers. These include development of innovative business strategies, strengthening its professional resources and driving market penetration with an ear-to-the-ground approach that is adaptive to local market needs.

The group is capitalising on emerging market opportunities to deliver high-end facilities and projects to its wide base of customers by constantly upgrading its internal skills and resource capabilities. In line with its current expansion plans, the DLF Group has over 289 million sq. ft. of development across its businesses, including developed and on-going projects. Under its home, offices and shopping mall segments, DLF is credited with over 224 million sq. ft. of completed developments, while projects under construction represent over 45 million sq. ft across the three verticals.

Book your apartment in DLF Commanders Court in few easy steps below.

- 1) Identify your apartment.
- 2) Booking amount Cheque in the name of Developer.
- 3) Receive booking confirmation, Receipts from DLF.
- 4) Any queries, contact Investinnest customer support in your respective country at numbers mentioned below.