

Type B 500 sq. yd. (420 sq. mt.) simplex

Super Area = 244.13 sq. mt. (2628 sq. ft.)



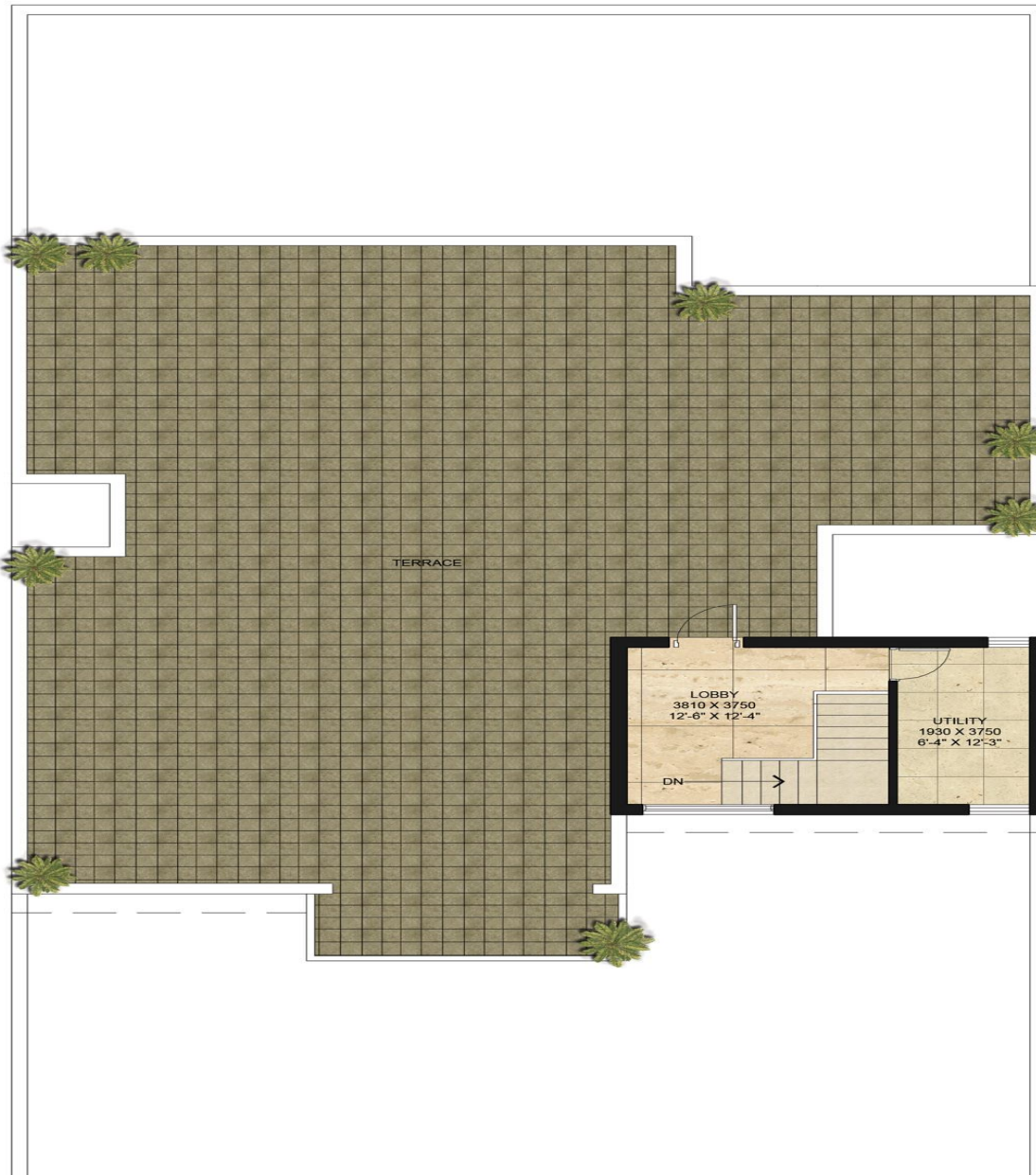
Ground Floor

217.55 sq. mt. (2342 sq. ft.)



Type B 500 sq. yd. (420 sq. mt.) *simplex*

Super Area = 244.13 sq. mt. (2628 sq. ft.)



First Floor

26.58 sq. mt. (286 sq. ft.)

