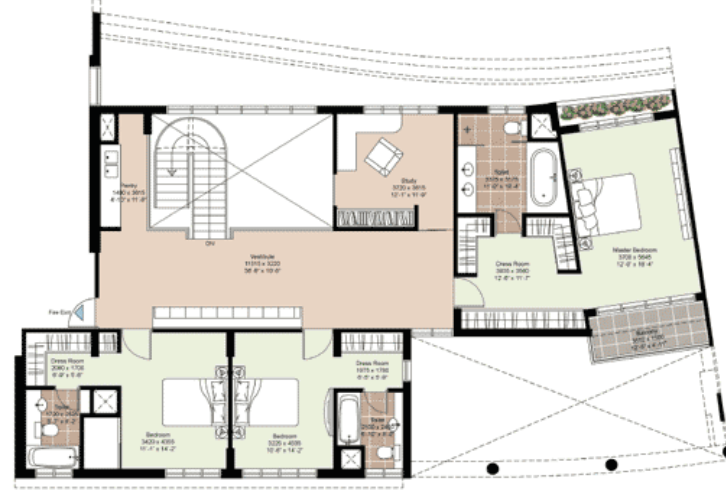
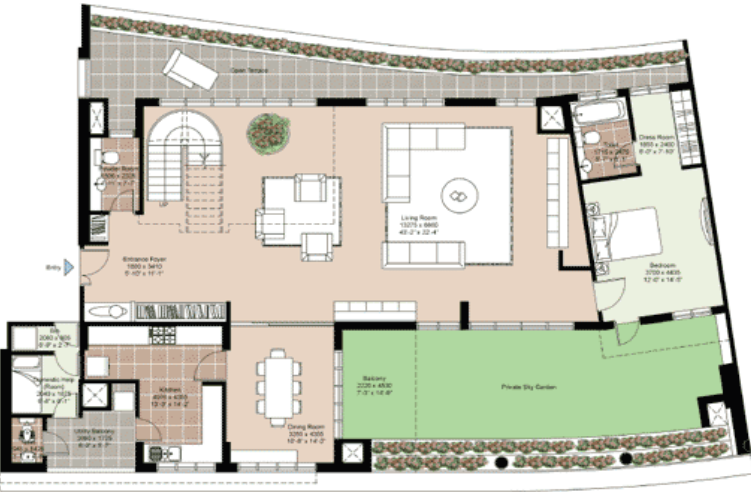


TYPE G
4 Bedroom Penthouse

(LOWER FLOOR)

(UPPER FLOOR)



LOCATION 3902(L+U) & 3903 (L+U)
 Super Built-up Area (sq.ft.) 5232
 Super Built-up Area (sq.m.) 486.28
 Open Terrace: 865 sq.ft.

Built-up Area = Super Built-up Area - 21.22% of Super Built-up Area