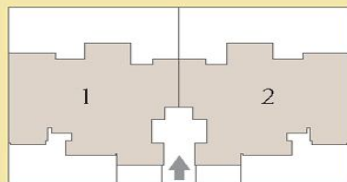


GROUND FLOOR PLAN

2100 SQ. FT.
4 BEDROOM, 4 BATHROOM, UTILITY,
S.ROOM, FRONT & REAR LAWN AND LIFT

PALM TERRACES



KEY PLAN

1 sq. metre = 1.196 sq. yard & 1 sq. metre = 10.76 sq. feet.

In the interest of maintaining high standards, all floor plans, layout plans, areas, dimensions and specifications are indicative and are subject to change as decided by the company or by any competent authority. Soft furnishing, cupboards, kitchen cabinets, furniture and gadgets are not part of the offering.

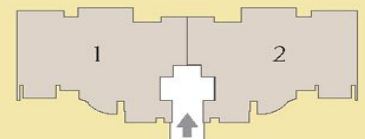
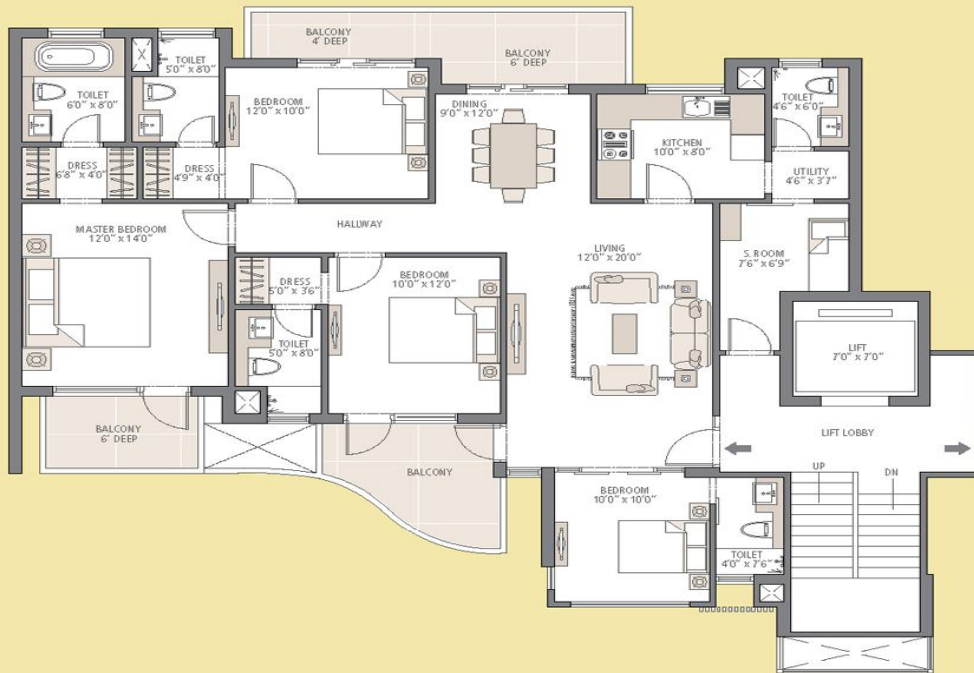


Call Us : UK 020 8090 4217 * USA (917) 338 6416 * Canada (613) 482 9788 * India 9717841117

TYPICAL FLOOR PLAN

2100 SQ. FT.
4 BEDROOM, 4 BATHROOM, UTILITY,
S.ROOM AND LIFT

PALM TERRACES



KEY PLAN

1 sq. metre = 1.196 sq. yard & 1 sq. metre = 10.76 sq. feet.

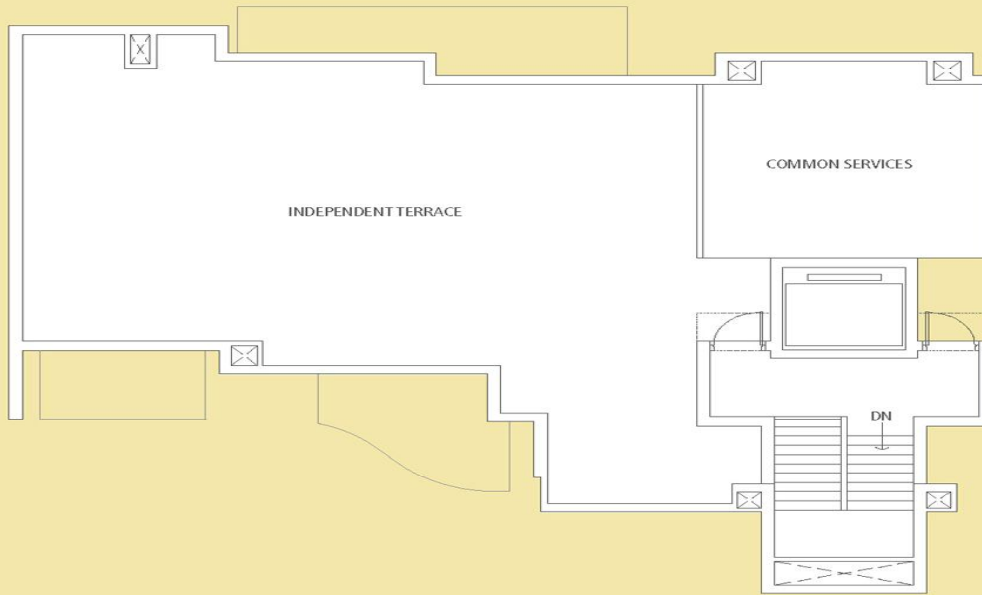
In the interest of maintaining high standards, all floor plans, layout plans, areas, dimensions and specifications are indicative and are subject to change as decided by the company or by any competent authority. Soft furnishing, cupboards, kitchen cabinets, furniture and gadgets are not part of the offering.



Call Us : UK 020 8090 4217 * USA (917) 338 6416 * Canada (613) 482 9788 * India 9717841117

TERRACE FLOOR PLAN
1150 SQ. FT.

PALM TERRACES



KEY PLAN

1 sq. metre = 1.196 sq. yard & 1 sq. metre = 10.76 sq. feet.

In the interest of maintaining high standards, all floor plans, layout plans, areas, dimensions and specifications are indicative and are subject to change as decided by the company or by any competent authority. Soft furnishing, cupboards, kitchen cabinets, furniture and gadgets are not part of the offering.



Call Us : UK 020 8090 4217 * USA (917) 338 6416 * Canada (613) 482 9788 * India 9717841117