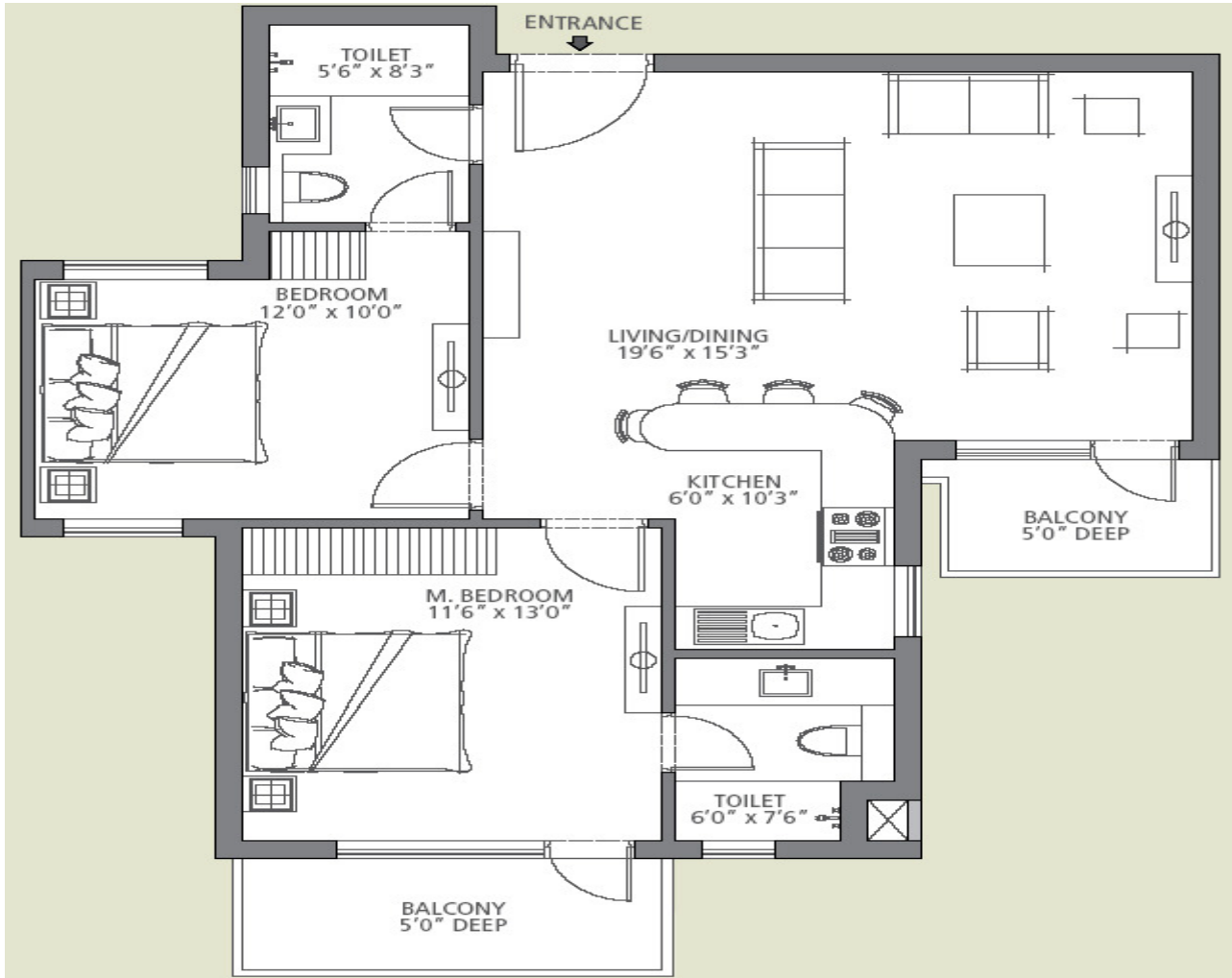


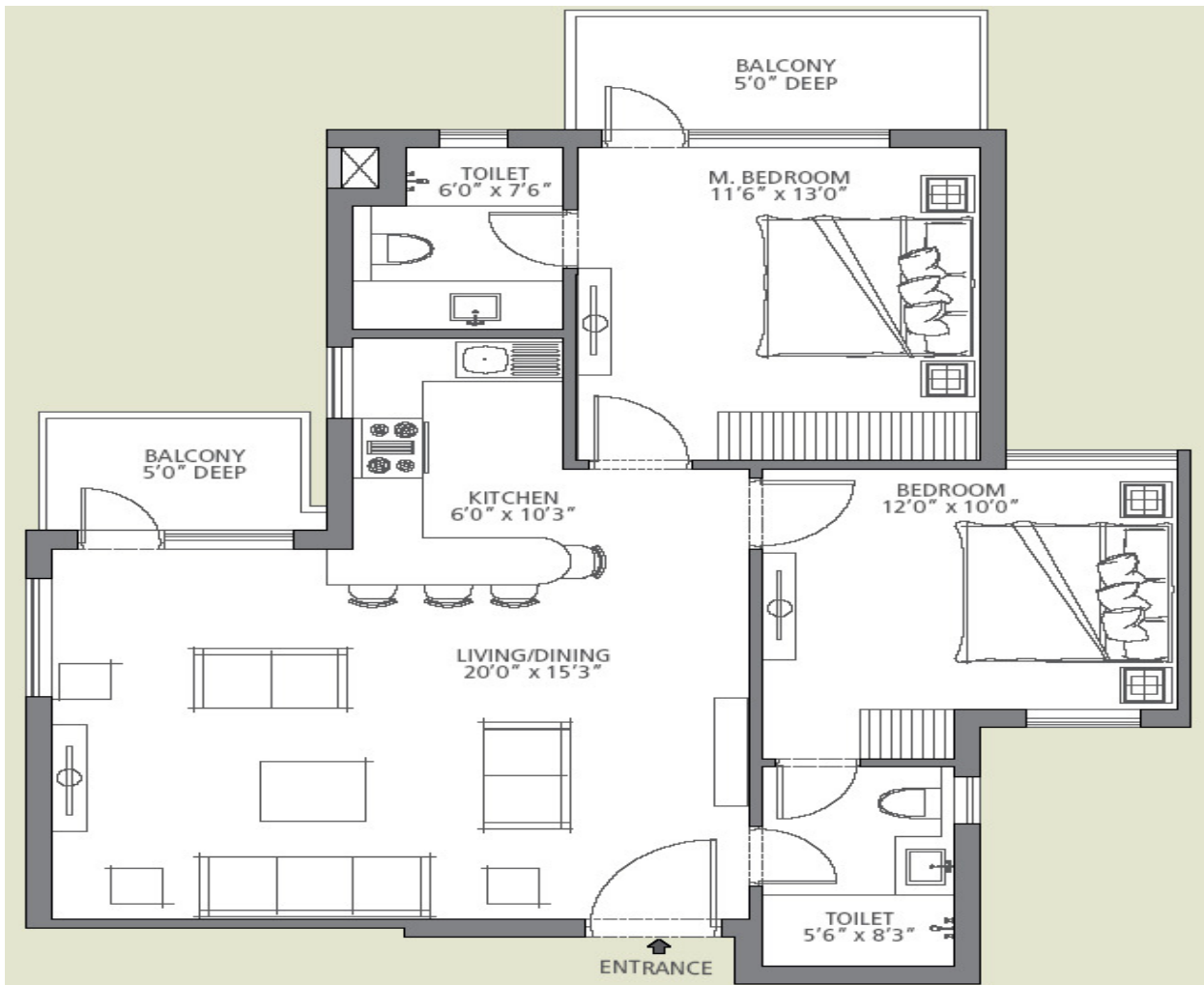
**Type A - 2 Bedroom Unit (1125 Sq. Feet)**



1 sq. metre = 1.196 sq. yard & 1 sq. metre = 10.76 sq. feet.

In the interest of maintaining high standards, all floor plans, layout plans, areas, dimensions and specifications are indicative and are subject to change as decided by the company or by any competent authority. Soft furnishing, cupboards, kitchen cabinets, furniture and gadgets are not part of the offering.

**Type C - 2 Bedroom Unit (1125 Sq. Feet)**

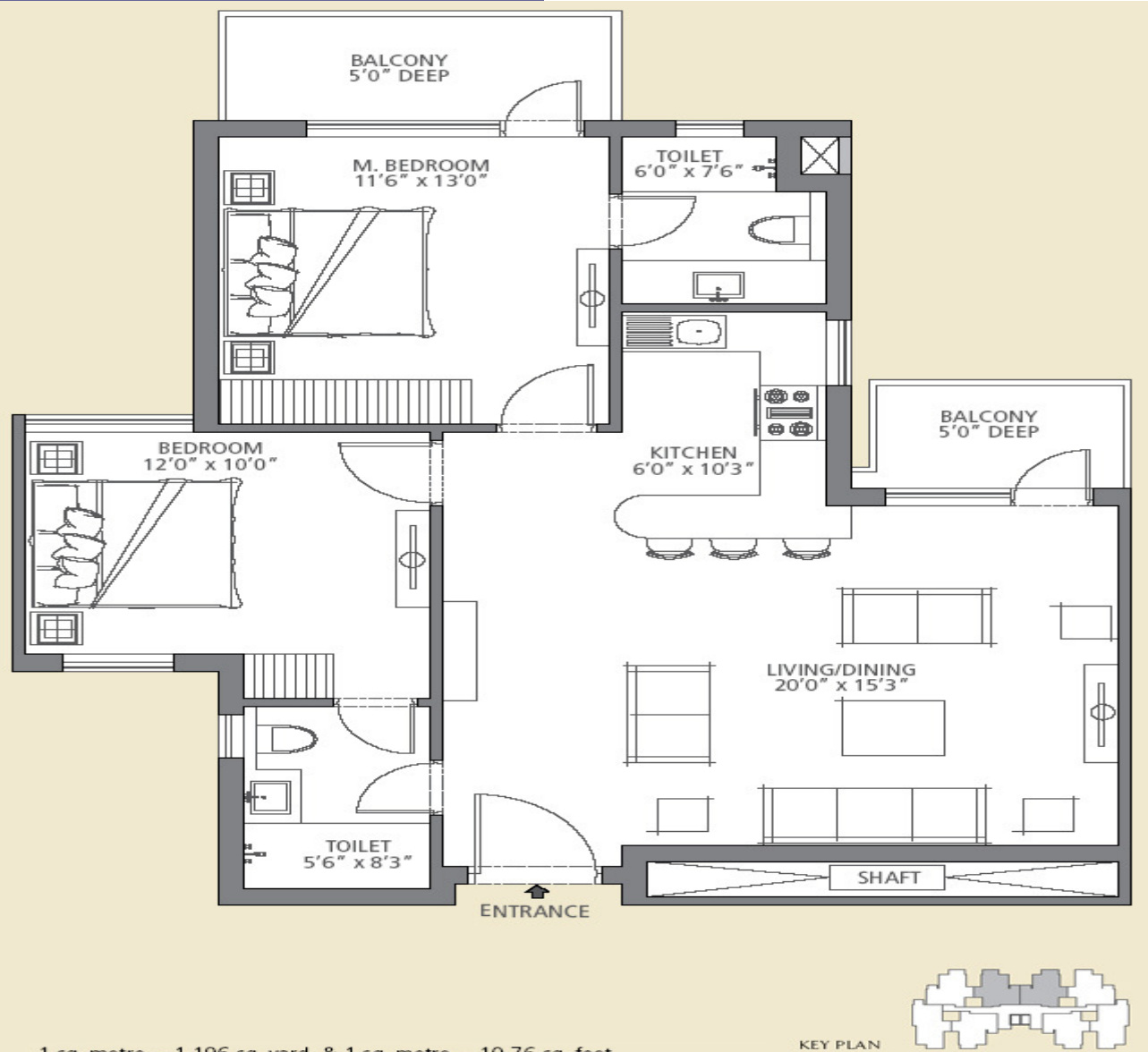


KEY PLAN

1 sq. metre = 1.196 sq. yard & 1 sq. metre = 10.76 sq. feet.

In the interest of maintaining high standards, all floor plans, layout plans, areas, dimensions and specifications are indicative and are subject to change as decided by the company or by any competent authority. Soft furnishing, cupboards, kitchen cabinets, furniture and gadgets are not part of the offering.

**Type D - 2 Bedroom Unit (1125 Sq. Feet)**



1 sq. metre = 1.196 sq. yard & 1 sq. metre = 10.76 sq. feet.

In the interest of maintaining high standards, all floor plans, layout plans, areas, dimensions and specifications are indicative and are subject to change as decided by the company or by any competent authority. Soft furnishing, cupboards, kitchen cabinets, furniture and gadgets are not part of the offering.